

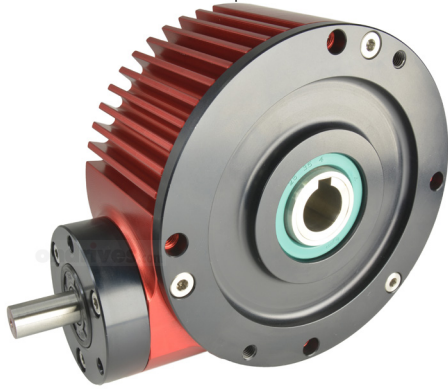
HRHC28

ondrives

Precision Gears

High Ratio Hypoid Gearboxes 28mm Offset

10mm Input Shaft • 15mm Output Bore • T_{2n} 20Nm **10:1 - 60:1**



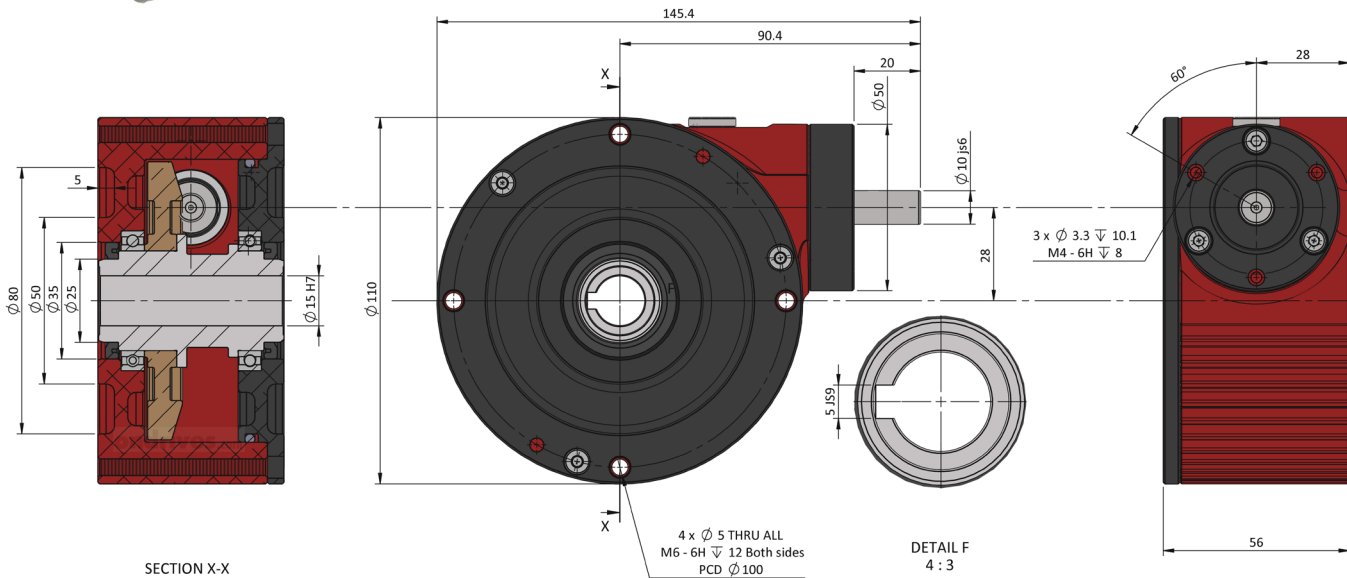
Hypoid Gear Rotation Direction.

RH-Right Hand Pinion Lead

LH-Left Hand Gear Lead

When input rotation is clockwise, output gear is pulled towards input.

When input is counter-clockwise, output gear is pushed away from input.



Output Backlash j	Part Numbers	Output Backlash j AR	Gear Ratio i	Efficiency η_z
$\leq 15'$ ($\leq 0.25^\circ$)	Output Backlash j A	$\leq 4'$ ($\leq 0.06^\circ$)		n1 nom
HRHC28-10	HRHC28-10A	HRHC28-10AR	10:1	93%
HRHC28-15	HRHC28-15A	HRHC28-15AR	15:1	91%
HRHC28-20	HRHC28-20A	HRHC28-20AR	20:1	90%
HRHC28-30	HRHC28-30A	HRHC28-30AR	30:1	88%
HRHC28-60	HRHC28-60A	HRHC28-60AR	60:1	88%

Weight: 1.32 kg.

Nom. Input Speed [S5 T_{2n}] n1nom: 1,500 min⁻¹ (r/min)

Max. Input Speed n1max: 3,000 min⁻¹ (r/min)

Lubrication: Klubersynth GH 6-220 Fully Synthetic Polyglycol Oil.

Lubrication Temperature: Max. Operating $\approx 95^\circ\text{C}$.

Max. Input Radial Load F_{r1} : 200N.

Max. Input Axial Load F_{a1} : 100N.

Max. Output Radial Load F_{r2} : 600N.

Max. Output Axial Load F_{a2} : 400N.

Testing in your application is necessary.

You will need to assess duty cycles and confirm suitability with your own calculations.

Figures listed are for guidance only.

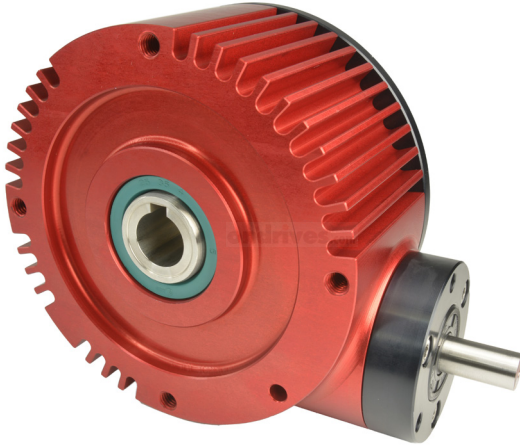
Lubrication filled with Klubersynth polyglycol GH6 synthetic high performance oil - not to be mixed with other types - VG ISO depends on speed/application.

Cooling may be needed dependent on application.

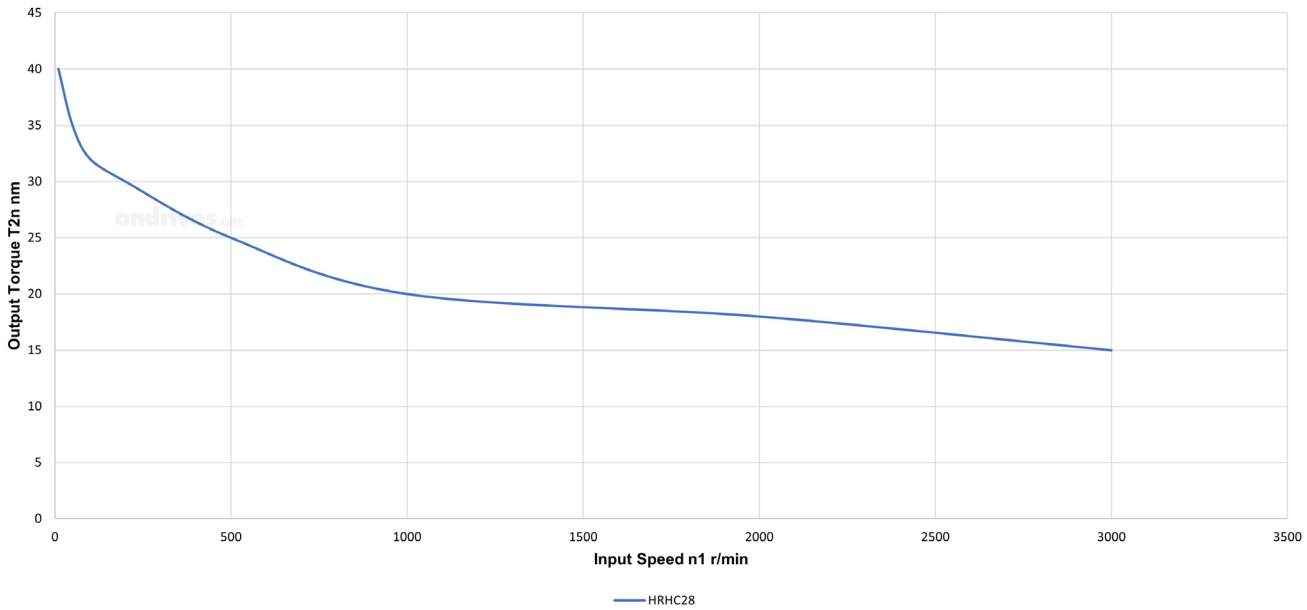
High Ratio Hypoid Reducers

High Ratio Hypoid Gearboxes 28mm Offset

10mm Input Shaft • 15mm Output Bore • T_{2n} 20Nm **10:1 - 60:1**



HRHC High Ratio Hypoid Gearbox



High Ratio Hypoid Reducers